

HANDRAIL SYSTEM INSTALLATION



FABACVB

**INSTALLATION INSTRUCTIONS:
HANDRAIL SYSTEMS**

RAIL INSTALLATION 1/2

If your installation utilizes threaded toggle bolts, please proceed to the Patented Standoff System Installation Instructions.
If your installation utilizes plastic straps, please refer to the In-Cab Removable Handrail Installation Section.

1.1 Install the Hand Rail.

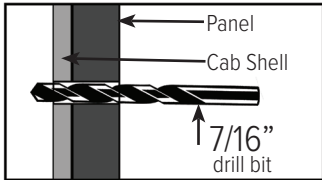


Figure 1.1

1.1 Drill a 7/16" hole in the cab shell at each panel hole location as shown in Figure 1.1.

1.2 Insert a 3/8" T-bolt through the hole and push the stud in until the toggle drops outside of the elevator cab shell as shown in Figure 1.2.
Apply a few drops of Loctite to the threads.

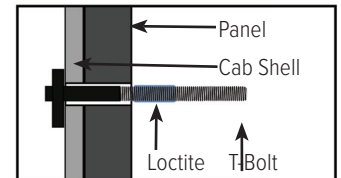


Figure 1.2

1.3 Thread the 3/4" aluminum insert onto the T-bolt as shown in Figure 1.3.

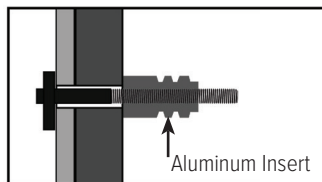


Figure 1.3

1.4 Tighten the aluminum insert using a 5/8" wrench on the flats of the aluminum insert.

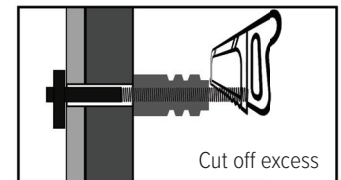


Figure 1.5

1.5 Cut the excess 3/8" stud off with a hacksaw as shown in Figure 1.5.

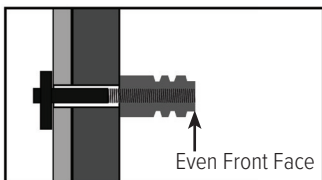


Figure 1.6

1.6 Make sure the front face of the aluminum insert is flush with the T-Bolt as shown in Figure 1.6.

1.7 Repeat steps 1.1 through 1.6 for all remaining mounting holes.

TIP: The two allen set screw holes located on each hand rail stand off should be facing down and not be visible from the top.

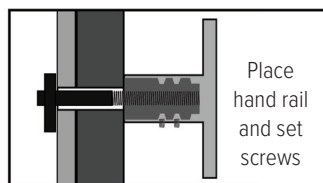


Figure 1.8

1.8 Locate the correct hand rail for wall "A" and slide the hand rail stand offs over the aluminum inserts until the stand offs are tight against the wall panel as shown in Figure 1.8.

1.9 Insert two allen set screws into each stand off and tighten using a 5/64" allen wrench as shown in Figure 1.9.

1.10 Make sure the hand rail is pushed tight against the panel before tightening set screws. Allen set screws will recess completely if hand rail is completely installed.

1.11 Repeat steps 1.8 through 1.10 for the remaining hand rails.

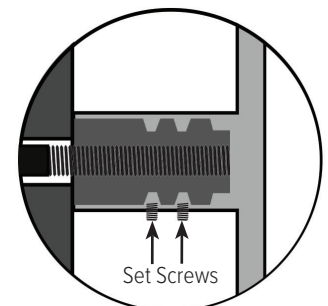


Figure 1.9

2.2 Install the Bumper Rail.

2.1 For bumper rail installation, repeat steps 1.1 through 1.10.

RAIL INSTALLATION 2/2

3.1 Install the Hand Rail.

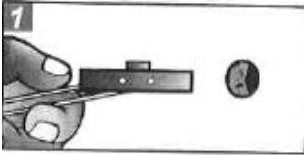


Figure 3.1

3.1 Drill a 7/16" hole in the cab shell at each panel hole location as shown in **Figure 3.1**. Hold metal channel flat alongside plastic straps and slide channel through pre-drilled hole.

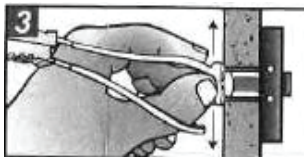


Figure 3.3

3.2 With one hand, pull rign so metal channel rests flush behind the cab shell. Slide plastic cap with other hand until flange of cap is flush with wall panel as shown in **Figure 3.2**.

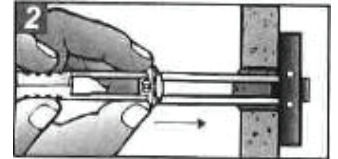


Figure 3.2

3.3 Place thumb between strap. Push thumb side to side, snapping off straps level with flange cap as shown in **Figure 3.3**.

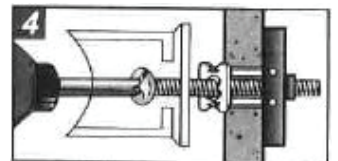


Figure 3.4

3.4 Place spacer over flange. Insert bolt and tighten until snug against cab wall and then stop. (Use only 1/4" -20 bolt (be conscience of cab wall to shaft wall clearances for any excess bolt length.) **Figure 3.4**

3.5 Repeat steps 3.1 through 3.4 for all remaining mounting holes.

4.4 Install the Bumper Rail.

4.4.1 For bumper rail installation, repeat steps 4.3.1 through 4.3.4.

