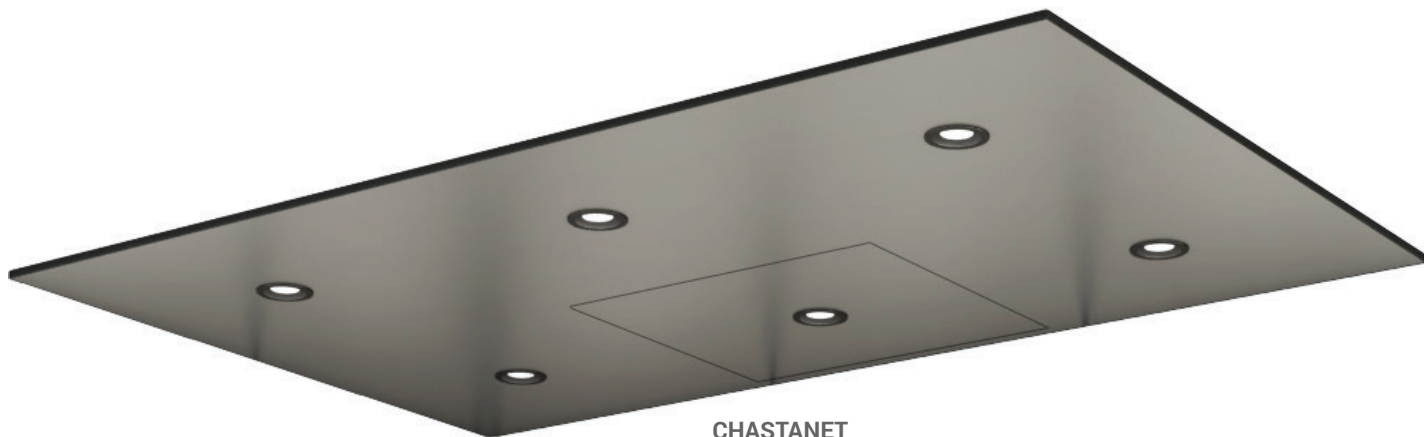


# ISLAND CEILING



CHASTANET



MANZANILLA

---

**FABACVB**

**INSTALLATION INSTRUCTIONS:  
ISLAND CEILING**

# CONTENT

**TIP:** Ensure you have all the required tools before installing.

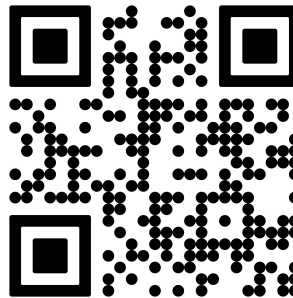
Please follow Personal Protective Gear requirements for your region.



## NEED MORE HELP?

WATCH A VIDEO TUTORIAL:

1. Open the Camera app.
2. Scan Q.R. Code.
3. Select the link.



**24 HOUR TECHNICAL HOTLINE: 800.800.4960**

Our staff is always ready to answer any questions, night or day.

**SPECIAL NOTES:**

---

---

---

---

---

---

---

---

---

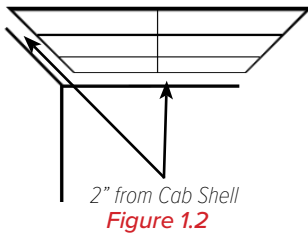
---

# INSTALLATION INSTRUCTION

## ISLAND CEILING

**TIP: Watch a video tutorial of installing ceiling or call our 24 Hour Technical Hotline.**

1.1 Review 'customer drawings' and 'packing list'.



1.2 If you have purchased a Fabacab interior, the standard perimeter gap from each edge of the ceiling to the cab shell is 2" as shown in **Figure 1.2**.

**TIP: We recommend to use a chalkline to create a centerline.**

1.3 Measure 3 ¾" from cab shell from the side & back wall. This will define the center line of the hatch channel for mounting brackets. The brackets must be placed atleast 2 inches from the corner.

**TIP: Your brackets will come pre-assembled, however should it be separated during shipment, assemble them as shown in **Figure 1.6A**.**

1.4. Remove ceiling from the crating carefully.

1.5 If lights were ordered, lights must be installed and plugged in before lifting the ceiling.

**TIP: All brackets provided must be used to ensure proper installation.**

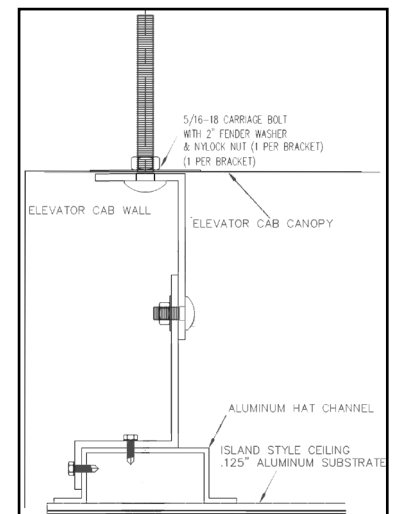
1.6 Mark the ceiling frame where each brackets will be attached as per chart and **Figure 1.6A & 1.6B**. The brackets should be equally spaced around the perimeter and across the center of ceiling.

| Ceiling Size | Number of Brackets | Brackets Distribution |        |             |
|--------------|--------------------|-----------------------|--------|-------------|
|              |                    | Corners               | Center | Longer Side |
| 0 - 15sq ft  | 8                  | 4                     | 2      | 2           |
| 15 - 32sq ft | 8                  | 4                     | 2      | 2           |
| 32 - 50sq ft | 10                 | 4                     | 4      | 2           |
| 50 - 60sq ft | 10                 | 4                     | 4      | 2           |

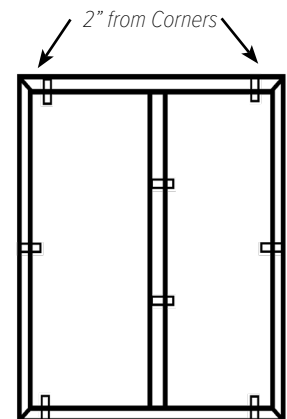
1.7 Use the provided step-bit, mark your holes and drill through the canopy.

1.8 Then, using your ceiling lift, raise ceiling & so that the bolt passes through the canopy. Install washers and nuts and then tighten.

1.9 Reference the Man-D-Tec installation instructions provided in the lighting kit.



**Figure 1.6A**



*Typical Bracket Placement*

**Figure 1.6B**

