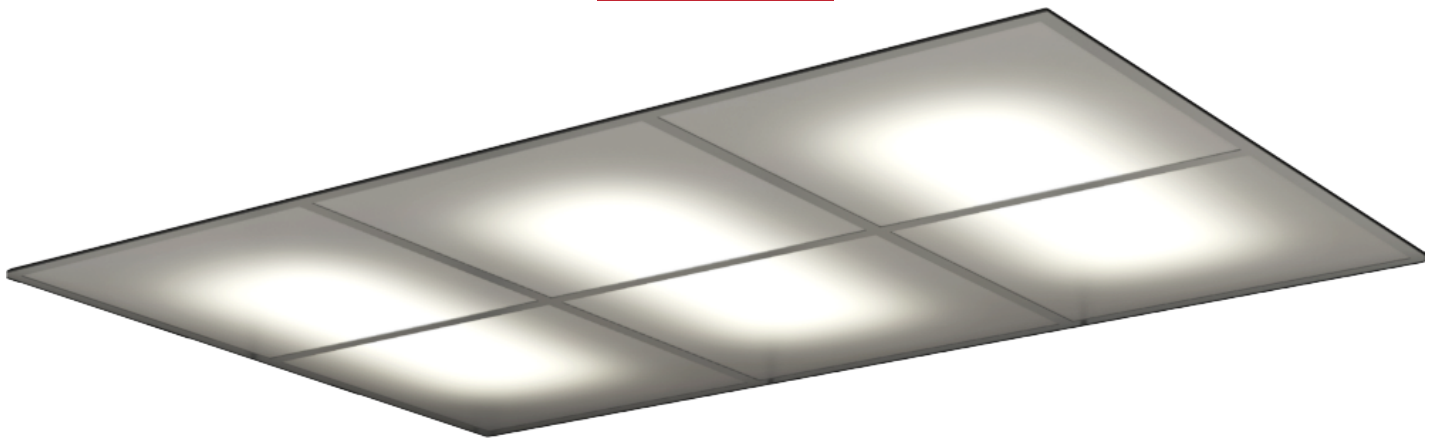
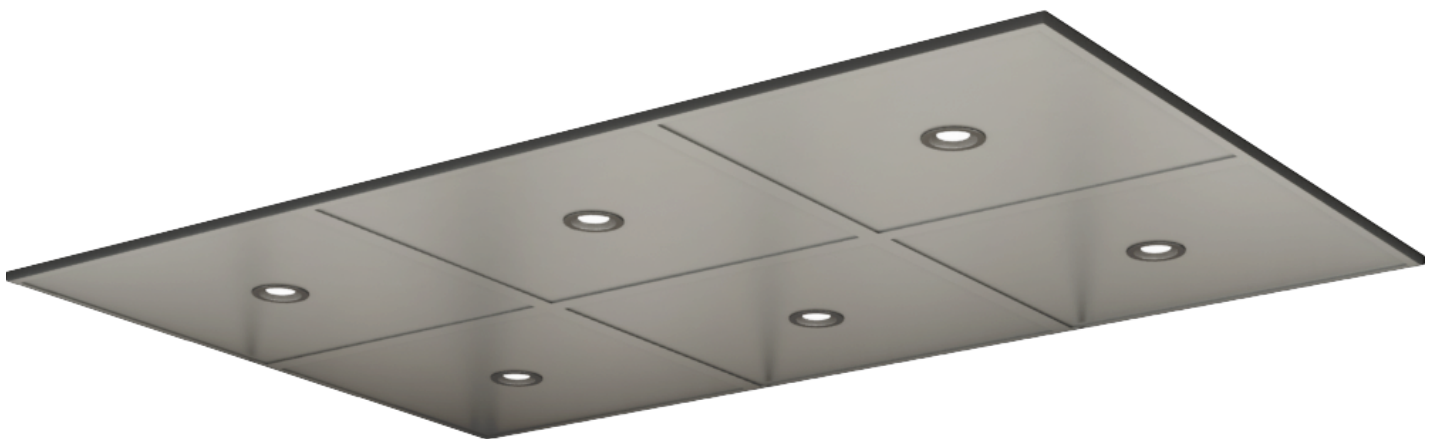


CURTAIN BLUFF



SAGESSE



ANEGADA

---

**FABACVB**

**INSTALLATION INSTRUCTIONS:  
T-FRAME CEILING**

# CONTENT

**TIP:** Ensure you have all the required tools before installing.

Please follow Personal Protective Gear requirements for your region.



## NEED MORE HELP?



### WATCH A VIDEO TUTORIAL:

1. Open the Camera app.
2. Scan Q.R. Code.
3. Select the link.



**24 HOUR TECHNICAL HOTLINE: 800.800.4960**

Our staff is always ready to answer any questions, night or day.

### SPECIAL NOTES:

---

---

---

---

---

---

---

---

---

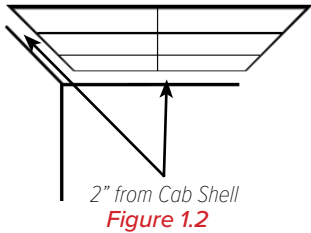
---

## INSTALLATION INSTRUCTION

# T-FRAME CEILING

**TIP:** Watch a video tutorial of installing ceiling or call our 24 Hour Technical Hotline.

1.1 Review 'approval drawings' and 'packing list'.



1.2 If you have purchased a Fabacab interior, the standard perimeter gap from each edge of the ceiling to the cab shell is 2" as shown in Figure 1.2.

1.3 To layout your anchor, measure 3 ¾" from the sides & back wall. This will define your intersection line from which you can now pull chalk lines for the brackets, which must be placed at least 2 inches from the corner.

**TIP:** We recommend to use a chalkline to create a centerline.

1.4. Remove ceiling from the crating carefully.

1.5 If lights were ordered, assemble and install them only after Step 1.8.

**TIP:** All brackets provided must be used to ensure proper installation.

1.6 Mark the ceiling frame where each bracket will be attached as per chart and Figure 1.6A & 1.6B. The brackets should be equally spaced around the perimeter and across the center of ceiling.

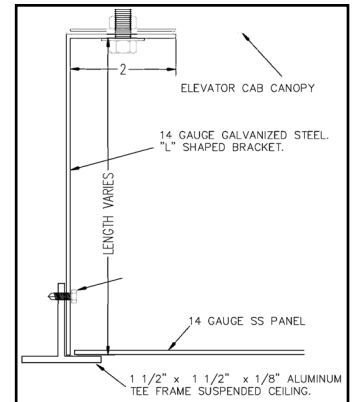
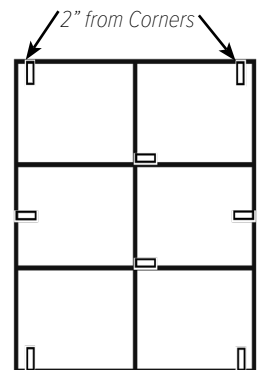


Figure 1.6A



Typical Bracket Placement

Figure 1.6B

Ceiling Size	Number of Brackets	Brackets Distribution		
		Corners	Center	Longer Side
0 - 15sq ft	8	4	2	2
15 - 32sq ft	8	4	2	2
32 - 50sq ft	10	4	4	2
50 - 60sq ft	10	4	4	2

1.8 Use the provided step-bit, mark your holes and drill through the canopy.

1.9 If lighting is included, mount the power supply to the top side of canopy & the lights in drop panels.

**TIP:** If Fabacab interior is being installed, do not install the ceiling drop-in panels until all wall panels are fastened to the cab shell to access the top panel brackets.

1.10 Raise ceiling & so that the bolt passes through the canopy. Install washers & nuts and then tighten.

1.11 Install the drop in panels into the ceiling frame and connect each light to the power supply. Reference the Man-D-Tec installation instructions provided in the lighting kit.

