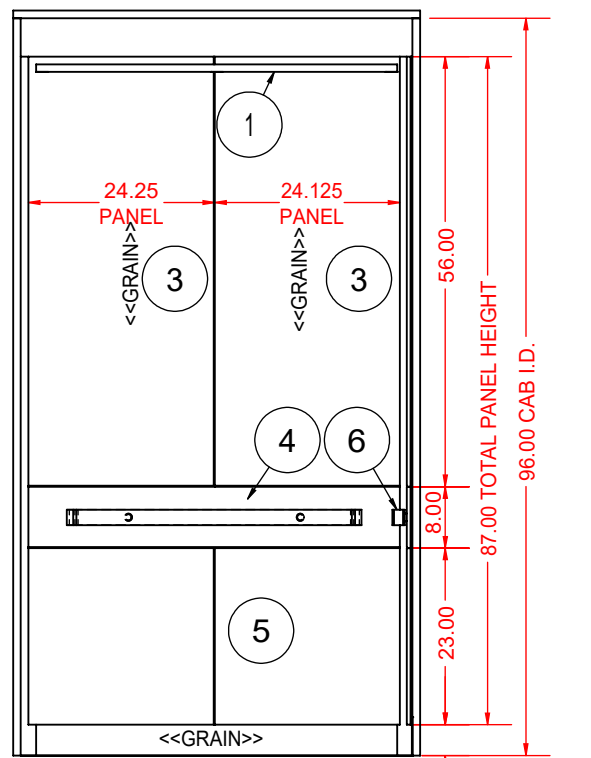


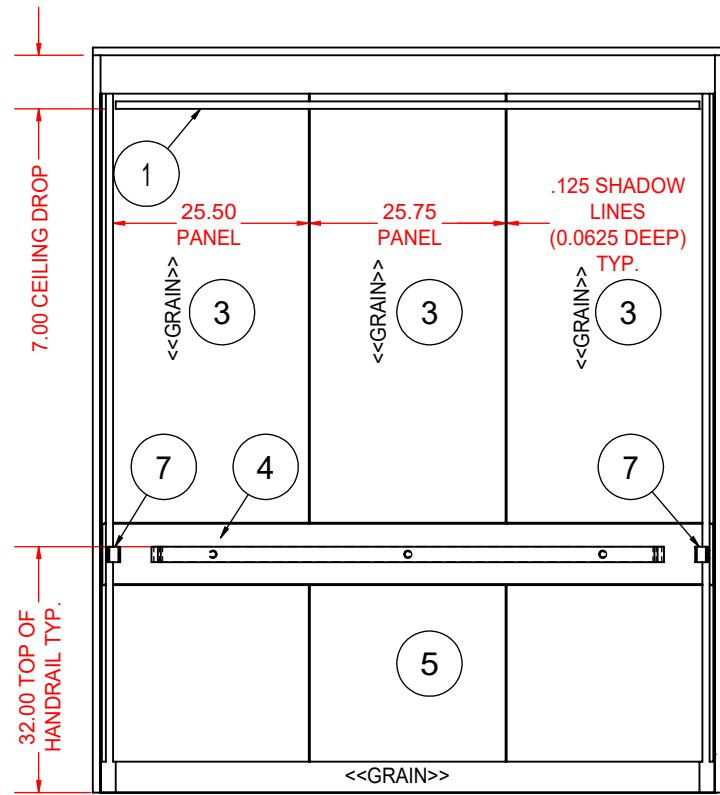
REFLECTED CEILING VIEW
A VIEW OF THE CAB AS IF LOOKING FROM ABOVE, THROUGH THE CEILING

PLAN VIEW

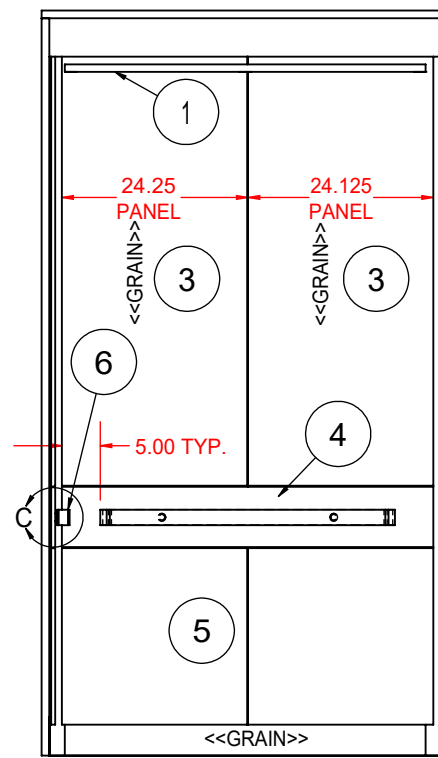
PARTS LIST & FINISH SELECTION				
ITEM	DESCRIPTION	MATERIAL	QTY	WEIGHT / lbs
1	CEILING	ANEGADA: BRUSHED ALUMINUM T-FRAME (1.50"X1.50"X.125") CEILING COATED IN CLEAR LACQUER WITH (6) 14 GAUGE STAINLESS STEEL #4 FINISH DROP IN PANELS	1	85.679
2	LIGHTING	SOLOBEAM-6: LED DOWN LIGHTING SYSTEM BY MAN-D-TEC. DIE-CAST SMOOTH BLACK FINISH FIXTURES	1 (SET)	8.6642
3	UPPER WALL PANELS	HYBRID PANEL SYSTEM CONSISTING OF (7) VERTICAL 1/2" FRPB PANELS FACED WITH WILSONART CALCUTTA MARBLE 4925K-07 LAMINATE. ALL PANELS ARE BANDED IN BLACK PVC EDGE BANDING	7	161.9333
4	HANDRAIL WALL PANELS	HYBRID PANEL SYSTEM CONSISTING OF (3) HORIZONTAL 1/2" FRPB PANELS FACED WITH 18 GAUGE S/S, #4 FINISH. ALL PANELS ARE BANDED IN BLACK PVC EDGE BANDING	3	42.5653
5	LOWER WALL PANELS	HYBRID PANEL SYSTEM CONSISTING OF (3) HORIZONTAL 1/2" FRPB PANELS FACED WITH WILSONART BLACK 1595-60 LAMINATE. ALL PANELS ARE BANDED IN BLACK PVC EDGE BANDING.	3	66.5083
6	BACK HANDRAIL	3/8" X 2.00" FLAT S/S, #4 FINISH WITH RETURNED ENDS. STANDARD, FLAT FACE STANDOFFS	1	14.1844
7	SIDE HANDRAILS	3/8" X 2.00" FLAT S/S, #4 FINISH WITH RETURNED ENDS. STANDARD, FLAT FACE STANDOFFS	2	16.3094
8	RECESSED BASE & REVEALS	20 GAUGE STAINLESS STEEL #4 FINISH	1 (SET)	22.3755



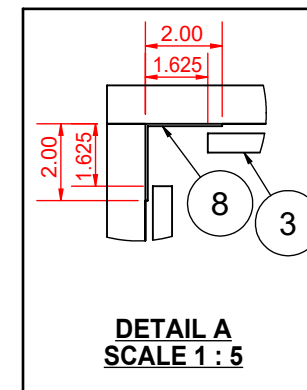
WALL ELEVATION A



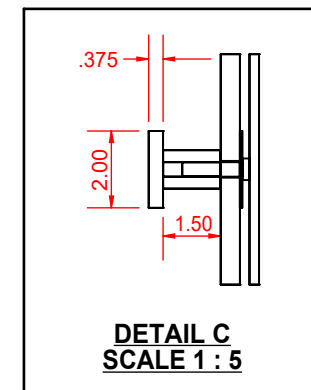
WALL ELEVATION B



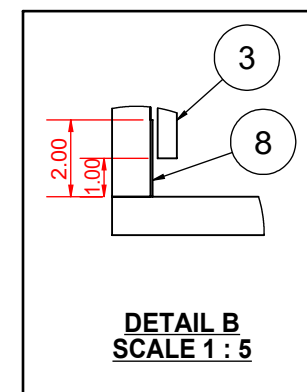
WALL ELEVATION C



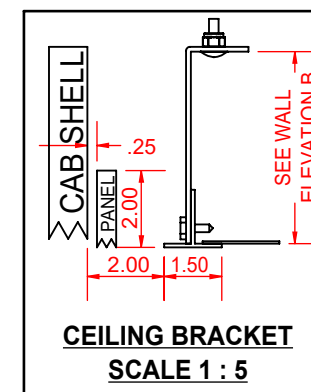
DETAIL A SCALE 1:5



DETAIL C SCALE 1:5



DETAIL B SCALE 1:5



CEILING BRACKET SCALE 1:5




8896 West State Rd. 236
Middletown, IN 47356
T: 800.800.4960

F.A.C. JOB NUMBER: XXXXX	CAPACITY: 2500 lbs	JOB NAME: JOB NAME HERE	SPECIFIC PRODUCT NOTES ALL DIMENSIONS ARE GIVEN IN INCHES (ALL DIMENSIONS ±1/32") QTY: 1 CAB	UNIT CONVERSION 1/2 = 0.5000 1/8 = 0.1250 3/16 = 0.1875 1/4 = 0.2500 5/16 = 0.3125 3/8 = 0.3750 7/16 = 0.4375
CAB I.D.: CAB XX	CONTACT: YOUR NAME HERE!	JOB NAME HERE		
WALL PANELS: MONTEGO BAY	CEILING TYPE: ANEGADA T-FRAME	DATE: XX/XX/20XX	DRAWING SCALE: 1:25	
SALES REP: SALES REP NAME HERE	FABRICATION APPROVAL SIGNATURE:			
REVISIONS:				SHEET 1-1



IMAGE FOR ILLUSTRATION
PURPOSES ONLY,
COLOR SHADES AND
PROPORTIONS MAY VARY

PARTS LIST & FINISH SELECTION				
ITEM	DESCRIPTION	MATERIAL	QTY	WEIGHT / lbs
1	CEILING	ANEGADA: BRUSHED ALUMINUM T-FRAME (1.50"X1.50"X.125") CEILING COATED IN CLEAR LACQUER WITH (6) 14 GAUGE STAINLESS STEEL #4 FINISH DROP IN PANELS	1	85.679
2	LIGHTING	SOLOBEAM-6: LED DOWN LIGHTING SYSTEM BY MAN-D-TEC. DIE-CAST SMOOTH BLACK FINISH FIXTURES	1 (SET)	8.6642
3	UPPER WALL PANELS	HYBRID PANEL SYSTEM CONSISTING OF (7) VERTICAL 1/2" FRPB PANELS FACED WITH WILSONART CALCUTTA MARBLE 4925K-07 LAMINATE. ALL PANELS ARE BANDED IN BLACK PVC EDGE BANDING	7	161.9333
4	HANDRAIL WALL PANELS	HYBRID PANEL SYSTEM CONSISTING OF (3) HORIZONTAL 1/2" FRPB PANELS FACED WITH 18 GAUGE S/S, #4 FINISH. ALL PANELS ARE BANDED IN BLACK PVC EDGE BANDING	3	42.5653
5	LOWER WALL PANELS	HYBRID PANEL SYSTEM CONSISTING OF (3) HORIZONTAL 1/2" FRPB PANELS FACED WITH WILSONART BLACK 1595-60 LAMINATE. ALL PANELS ARE BANDED IN BLACK PVC EDGE BANDING.	3	66.5083
6	BACK HANDRAIL	3/8" X 2.00" FLAT S/S, #4 FINISH WITH RETURNED ENDS. STANDARD, FLAT FACE STANDOFFS	1	14.1844
7	SIDE HANDRAILS	3/8" X 2.00" FLAT S/S, #4 FINISH WITH RETURNED ENDS. STANDARD, FLAT FACE STANDOFFS	2	16.3094
8	RECESSED BASE & REVEALS	20 GAUGE STAINLESS STEEL #4 FINISH	1 (SET)	22.3755

 <p>8896 West State Rd. 236 Middletown, IN 47356</p> <p>T: 800.800.4960</p>	F.A.C. JOB NUMBER: XXXXX	CAPACITY: 2500 lbs	JOB NAME: JOB NAME HERE	SPECIFIC PRODUCT NOTES ALL DIMENSIONS ARE GIVEN IN INCHES (ALL DIMENSIONS ±1/32") QTY: 1 CAB	UNIT CONVERSION 1/2 = 0.5000 1/16 = 0.0625 9/16 = 0.5625 1/8 = 0.1250 5/8 = 0.6250 3/16 = 0.1875 11/16 = 0.6875 1/4 = 0.2500 3/4 = 0.7500 5/16 = 0.3125 13/16 = 0.8125 3/8 = 0.3750 7/8 = 0.8750 7/16 = 0.4375 15/16 = 0.9375
	CAB I.D.: CAB XX	CONTACT: YOUR NAME HERE!	CEILING TYPE: ANEGADA T-FRAME		
	WALL PANELS: MONTEGO BAY	DATE: XX/XX/20XX	DRAWING SCALE: 1 : 25		
	SALES REP: SALES REP NAME HERE	FABRICATION APPROVAL SIGNATURE:			
	REVISIONS:				